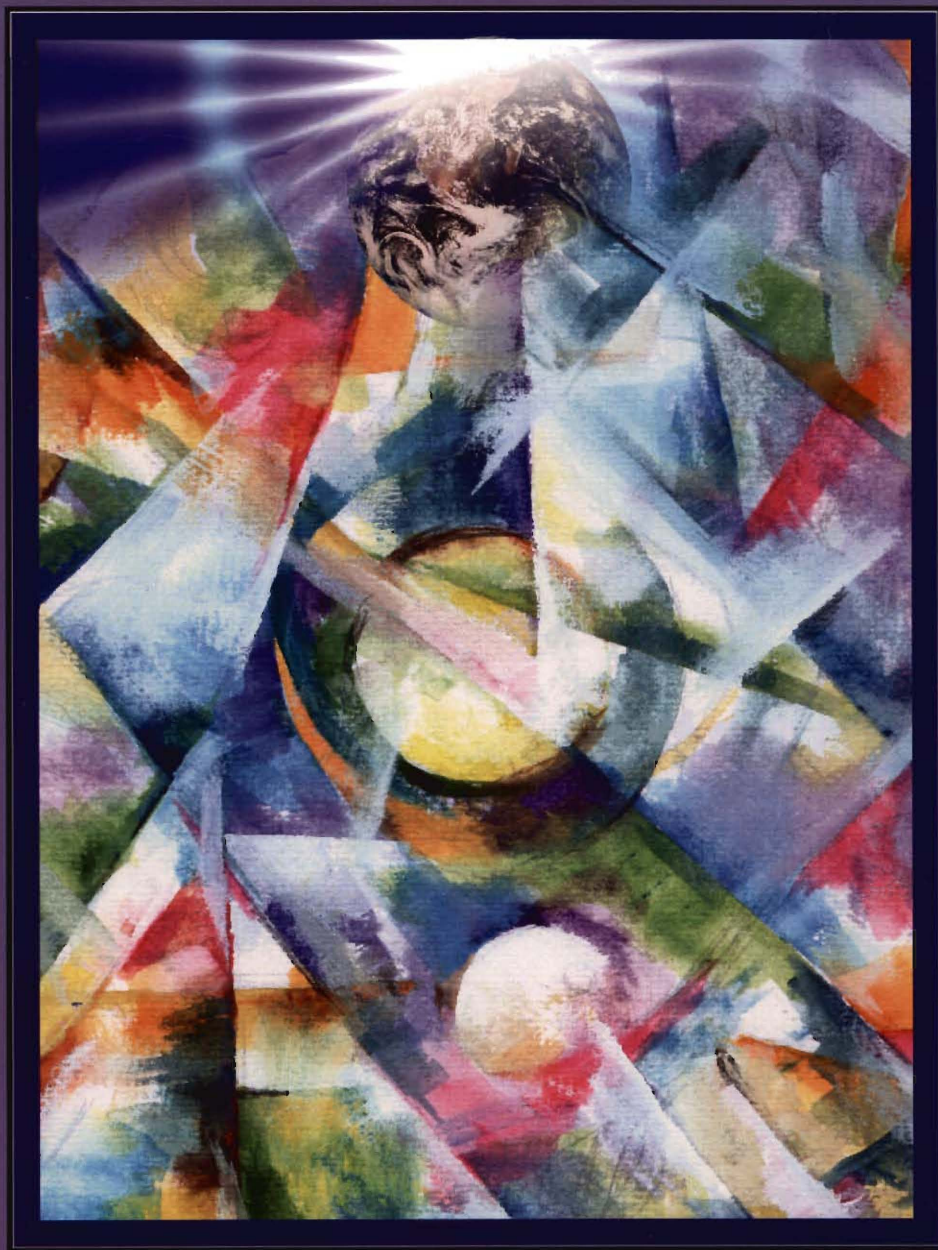


# *Subtle Energies & Energy Medicine*



**Volume Eighteen • Number Three**



*The Bringers of Light* is an abstract representation of the subtle energies of light and color which are alive around us. In an almost mathematical dance they are in constant motion and color pervading the subtle energies fields within our bodies and the atmosphere around us. It is our interaction and harmony with these energies that gives us life and aligns us to the inner fields and dimensions of energy within.

Charlie Elkind is a spiritual graphic artist and the founder of Charlie's Cards. He has been involved with meditation and working with the subtle energies of healing for many years. A life member of the Theosophical Society, he had lived at Pumpkin Hollow for many years. Pumpkin Hollow was the birthplace where the modality of Therapeutic Touch was first created and practiced by Dora Kunz and Dr. Delores Krieger.



***Subtle Energies &  
Energy Medicine***

*The Bringers of Light*

EDITOR

**BERNARD O. WILLIAMS, PH.D.**

ASSOCIATE EDITOR

**ELMER GREEN, PH.D.**

MANAGING EDITOR

**DENISE LEWIS PREMSCHAK**

DESIGN EDITOR

**JUSTIN BLOCK**

JOURNAL ADVISORY BOARD

**ROBERT O. BECKER, M.D.** • **DANIEL BENOR, M.D.** • **WILLIAM G. BRAUD, PH.D.**  
**WILLIAM COLLINGE, PH.D., M.P.H.** • **LOLAFAYE COYNE, PH.D.** • **WILLIAM GOUGH, M.S.**  
**BERNARD GRAD, PH.D.** • **DOLORES KRIEGER, PH.D.** • **JEFF LEVIN, PH.D., M.P.H.**  
**E. STANTON MAXEY, M.D.** • **GLADYS MCGAREY, M.D.** • **PATRICIA NORRIS, PH.D.**  
**DEAN I. RADIN, PH.D.** • **BEVERLY RUBIK, PH.D.** • **C. NORMAN SHEALY, M.D., PH.D.**  
**CHARLES R. TART, PH.D.** • **WILLIAM A. TILLER, PH.D.** • **SCOTT WALKER, M.D.**

ISSUE BOARD OF DIRECTORS

PRESIDENT

**BERNARD O. WILLIAMS, PH.D.**

DIRECTORS

**STEVEN L. FAHRION, PH.D.** • **KATE HASTINGS, TH.M.** • **CHRISTINE HIBBARD, PH.D.**  
**KAREN MAJIK, M.A.** • **KARL MARET, M.D.** • **PATRICIA A. NORRIS, PH.D.**  
**ANN NUNLEY, PH.D.** • **JIM OSCHMAN, PH.D.** • **CHRISTINE PAGE, M.D.**

CHIEF EXECUTIVE OFFICER

**DENISE LEWIS PREMSCHAK**

FOUNDING PRESIDENT

**ELMER GREEN, PH.D.**

THE MISSION OF ISSSEEM IS TO SERVE AS AN OPEN FORUM FOR SCIENTIFIC AND INTUITIVE EXPLORATION OF INTEGRATIVE HEALING, APPLIED SPIRITUALITY, AND THE SUBTLE REALMS.

**WWW.ISSSEEM.ORG**

*The International Society for the Study of Subtle Energies and Energy Medicine is a non-profit, public benefit corporation based in Colorado. Submissions must conform to guidelines detailed at the end of the Journal. © 2007 by The International Society for the Study of Subtle Energies and Energy Medicine.*

**Society Headquarters and Editorial Office:** ISSSEEM, 11005 Ralston Road, Suite 210, Arvada, CO 80004  
telephone: (303) 425-4625 • FAX: (303) 425-4685

**ISSN 1099-6591**

e-mail: [info@issseem.org](mailto:info@issseem.org) • website: [www.issseem.org](http://www.issseem.org)